

**US Army Corps
of Engineers**
Jacksonville District
**SAFETY ON THIS JOB
DEPENDS ON YOU**

JACKSONVILLE HARBOR, FLORIDA
ANNUAL EXAMINATION SURVEY FY22
 STA. 10+00 CUT-53 THRU STA. 10+00 CUT-55
PLAN

Scale: AS SHOWN
 Drawing no. **41**
 SHEET 41 OF 57

Designed by: WRM
Checked by: WRM
Drawn by: WRM
Date: JAN 2022

Drawn by: GHR
Checked by: GHR
Date: JAN 2022

MAP LABEL	AIDS TO NAVIGATION	PLANE COORDINATES	LATITUDE	LONGITUDE
G71H	N. BUOY #1 (0122)	X: 455.376 Y: 9485.582	30°22'41.40"	81°37'37.54"

GRAPHIC SCALE
0 100' 200'

NOTES:
1. REFER TO SURVEY NO. 22-001.
2. SEE SHEET NO. 1 FOR SURVEY NOTES.

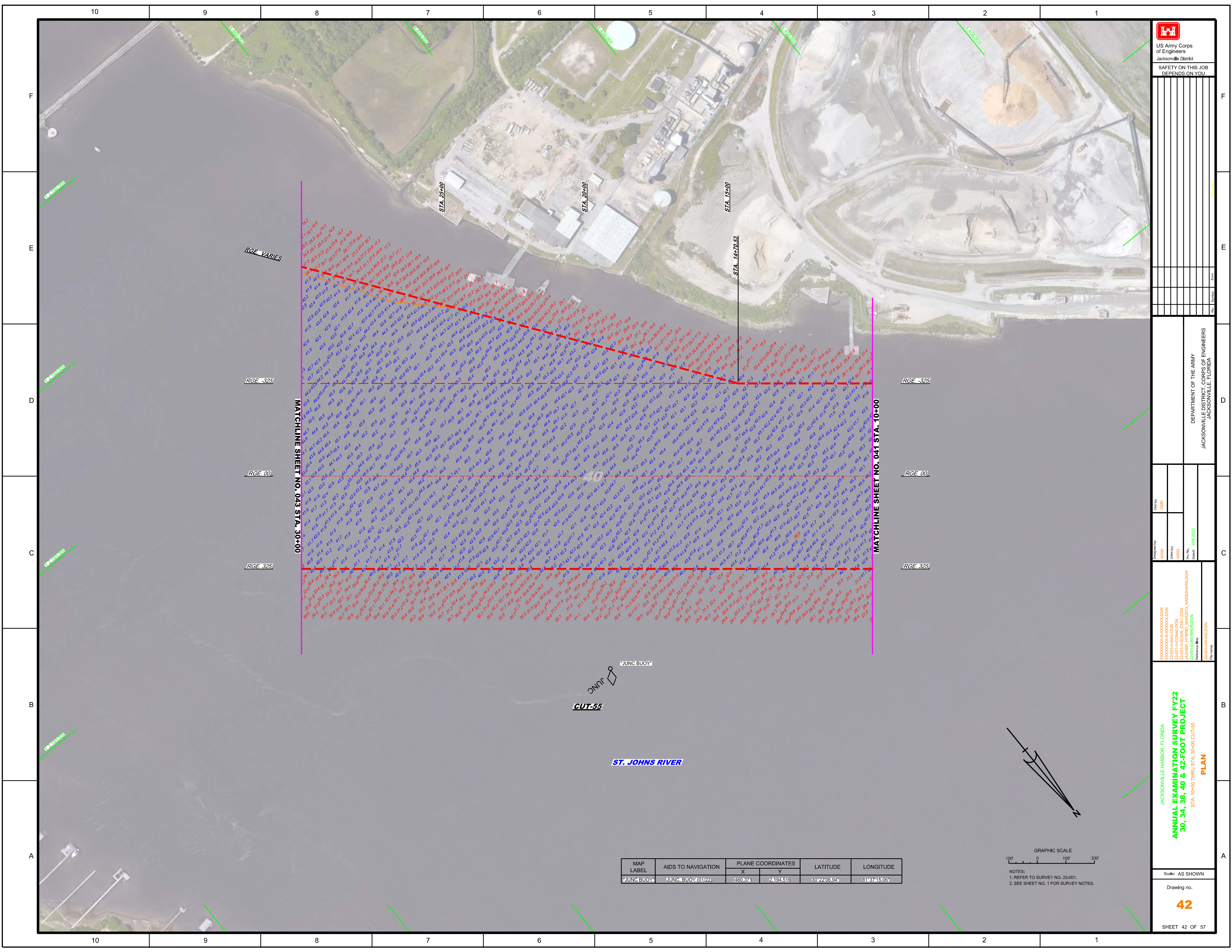
XXXXXXXXXXXXXXXXXXXX.DGN
22-001-HARV-DIGEN.DGN
22-001-HARV-DIGEN.DGN
22-001-HARV-DIGEN.DGN
22-001-HARV-DIGEN.DGN
22-001-HARV-DIGEN.DGN
22-001-HARV-DIGEN.DGN
22-001-HARV-DIGEN.DGN
22-001-HARV-DIGEN.DGN
22-001-HARV-DIGEN.DGN
22-001-HARV-DIGEN.DGN
22-001-HARV-DIGEN.DGN

Department of the Army
Jacksonville District, Corps of Engineers
Jacksonville, Florida

10 9 8 7 6 5 4 3 2 1

F
E
D
C
B
A

F
E
D
C
B
A



MATCHLINE SHEET NO. 043 STA. 30+00

MATCHLINE SHEET NO. 041 STA. 10+00

RGE VARIES

RGE -325

RGE 00

RGE -325

RGE -325

RGE 00

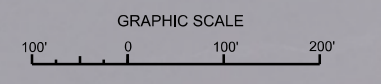
RGE -325

CUT-55

ST. JOHNS RIVER

JUNC BUOY

MAP LABEL	AIDS TO NAVIGATION	PLANE COORDINATES		LATITUDE	LONGITUDE
		X	Y		
JUNC BUOY	JUNC BUOY (01/22)	480371	2194516	30°22'08.94"	81°37'45.06"



NOTES:
 1. REFER TO SURVEY NO. 22-001.
 2. SEE SHEET NO. 1 FOR SURVEY NOTES.

US Army Corps of Engineers
Jacksonville District

SAFETY ON THIS JOB
DEPENDS ON YOU

DEPARTMENT OF THE ARMY
JACKSONVILLE DISTRICT, CORPS OF ENGINEERS
JACKSONVILLE, FLORIDA

Designed By: WRM Drawn By: WRM Check By: GHR	Date: JAN 2022
---	-----------------------

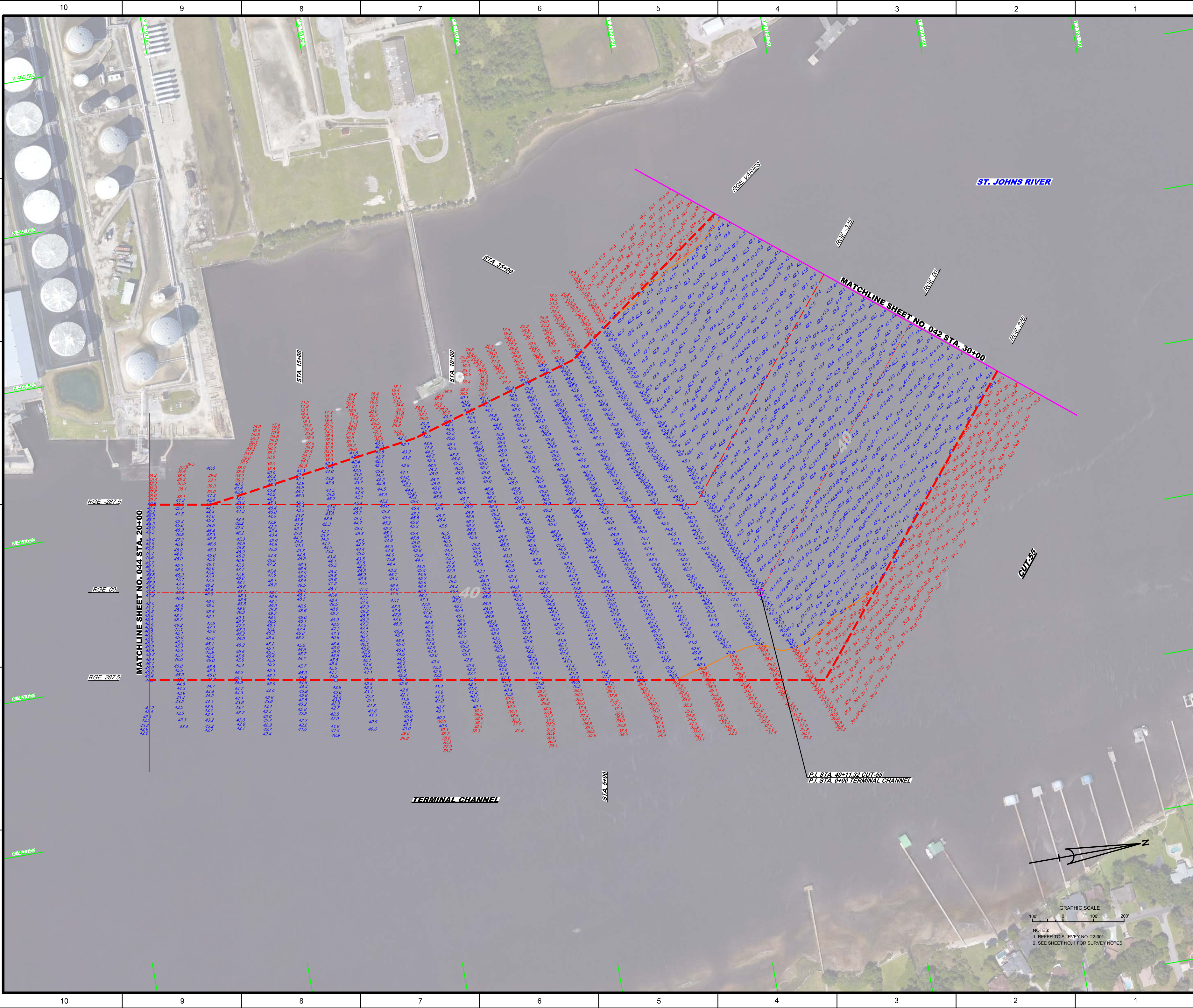
XXXXXXXXXXXXXXXX.DGN
 22-001-AN-000.DGN
 22-001-AN-CON-000.DGN
 22-001-AN-CON-001.DGN
 22-001-AN-CON-002.DGN
 22-001-AN-CON-003.DGN
 22-001-AN-CON-004.DGN
 22-001-AN-CON-005.DGN
 22-001-AN-CON-006.DGN
 22-001-AN-CON-007.DGN
 22-001-AN-CON-008.DGN
 22-001-AN-CON-009.DGN
 22-001-AN-CON-010.DGN
 22-001-AN-CON-011.DGN
 22-001-AN-CON-012.DGN
 22-001-AN-CON-013.DGN
 22-001-AN-CON-014.DGN
 22-001-AN-CON-015.DGN
 22-001-AN-CON-016.DGN
 22-001-AN-CON-017.DGN
 22-001-AN-CON-018.DGN
 22-001-AN-CON-019.DGN
 22-001-AN-CON-020.DGN
 22-001-AN-CON-021.DGN
 22-001-AN-CON-022.DGN
 22-001-AN-CON-023.DGN
 22-001-AN-CON-024.DGN
 22-001-AN-CON-025.DGN
 22-001-AN-CON-026.DGN
 22-001-AN-CON-027.DGN
 22-001-AN-CON-028.DGN
 22-001-AN-CON-029.DGN
 22-001-AN-CON-030.DGN
 22-001-AN-CON-031.DGN
 22-001-AN-CON-032.DGN
 22-001-AN-CON-033.DGN
 22-001-AN-CON-034.DGN
 22-001-AN-CON-035.DGN
 22-001-AN-CON-036.DGN
 22-001-AN-CON-037.DGN
 22-001-AN-CON-038.DGN
 22-001-AN-CON-039.DGN
 22-001-AN-CON-040.DGN
 22-001-AN-CON-041.DGN
 22-001-AN-CON-042.DGN
 22-001-AN-CON-043.DGN
 22-001-AN-CON-044.DGN
 22-001-AN-CON-045.DGN
 22-001-AN-CON-046.DGN
 22-001-AN-CON-047.DGN
 22-001-AN-CON-048.DGN
 22-001-AN-CON-049.DGN
 22-001-AN-CON-050.DGN
 22-001-AN-CON-051.DGN
 22-001-AN-CON-052.DGN
 22-001-AN-CON-053.DGN
 22-001-AN-CON-054.DGN
 22-001-AN-CON-055.DGN
 22-001-AN-CON-056.DGN
 22-001-AN-CON-057.DGN
 22-001-AN-CON-058.DGN
 22-001-AN-CON-059.DGN
 22-001-AN-CON-060.DGN
 22-001-AN-CON-061.DGN
 22-001-AN-CON-062.DGN
 22-001-AN-CON-063.DGN
 22-001-AN-CON-064.DGN
 22-001-AN-CON-065.DGN
 22-001-AN-CON-066.DGN
 22-001-AN-CON-067.DGN
 22-001-AN-CON-068.DGN
 22-001-AN-CON-069.DGN
 22-001-AN-CON-070.DGN
 22-001-AN-CON-071.DGN
 22-001-AN-CON-072.DGN
 22-001-AN-CON-073.DGN
 22-001-AN-CON-074.DGN
 22-001-AN-CON-075.DGN
 22-001-AN-CON-076.DGN
 22-001-AN-CON-077.DGN
 22-001-AN-CON-078.DGN
 22-001-AN-CON-079.DGN
 22-001-AN-CON-080.DGN
 22-001-AN-CON-081.DGN
 22-001-AN-CON-082.DGN
 22-001-AN-CON-083.DGN
 22-001-AN-CON-084.DGN
 22-001-AN-CON-085.DGN
 22-001-AN-CON-086.DGN
 22-001-AN-CON-087.DGN
 22-001-AN-CON-088.DGN
 22-001-AN-CON-089.DGN
 22-001-AN-CON-090.DGN
 22-001-AN-CON-091.DGN
 22-001-AN-CON-092.DGN
 22-001-AN-CON-093.DGN
 22-001-AN-CON-094.DGN
 22-001-AN-CON-095.DGN
 22-001-AN-CON-096.DGN
 22-001-AN-CON-097.DGN
 22-001-AN-CON-098.DGN
 22-001-AN-CON-099.DGN
 22-001-AN-CON-100.DGN


JACKSONVILLE HARBOR, FLORIDA
ANNUAL EXAMINATION SURVEY FY22
30, 34, 38, 40 & 42-FOOT PROJECT
STA. 10+00 THRU STA. 30+00 CUT-55
PLAN

Scale: AS SHOWN

Drawing no.

SHEET 42 OF 57





US Army Corps of Engineers
Jacksonville District
SAFETY ON THIS JOB
DEPENDS ON YOU

DEPARTMENT OF THE ARMY
JACKSONVILLE DISTRICT CORPS OF ENGINEERS
JACKSONVILLE, FLORIDA

Designed by: **WRM**

Checked by: **WRM**

Drawn by: **WRM**

Reviewed by: **WRM**

Reference: **22-001-PM-HARLDGN**

Client: **GHR**

Drawn by: **WRM**

Reviewed by: **WRM**

Drawn by: **WRM**

Checked: **JAN 2022**

Reference: **22-001-PM-HARLDGN**

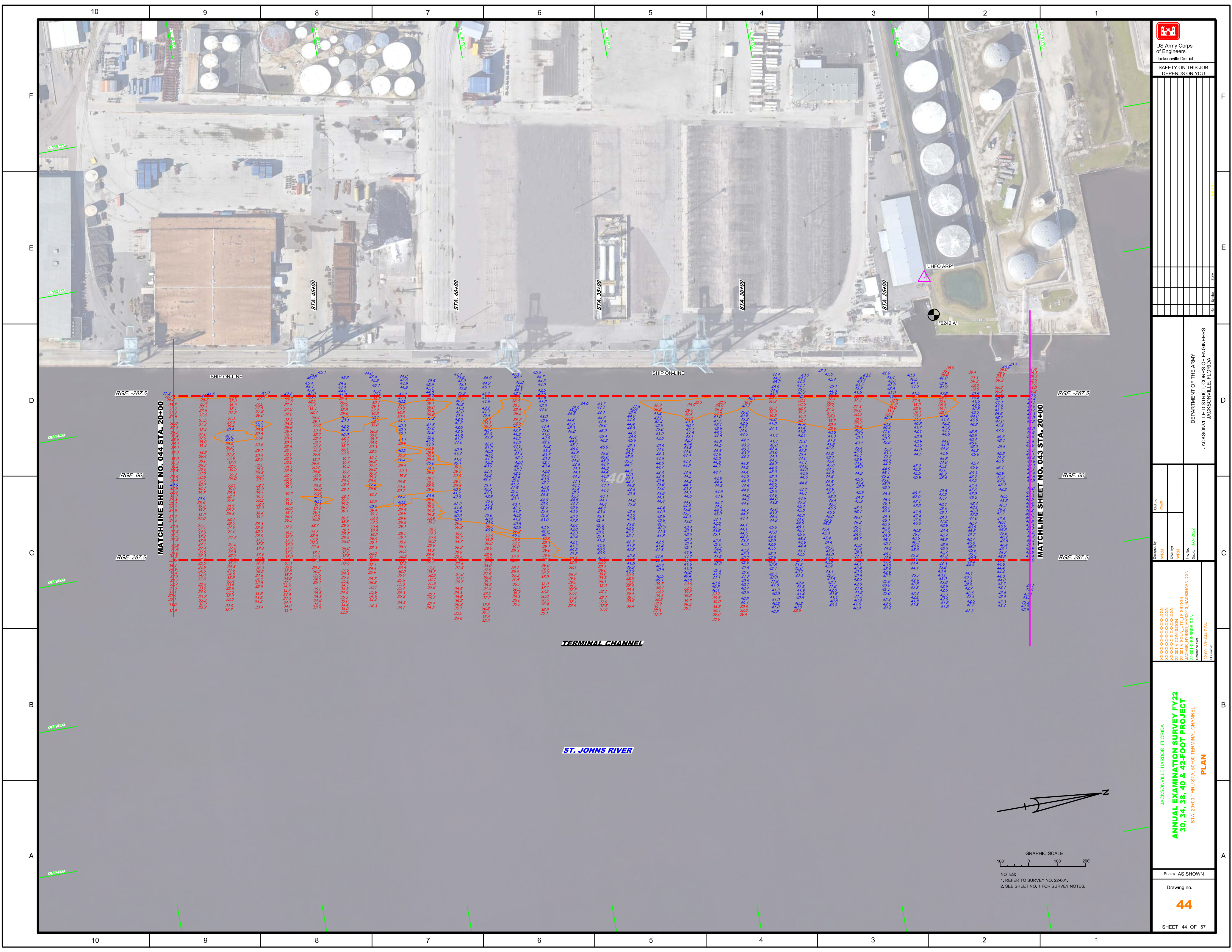
ANNUAL EXAMINATION SURVEY FY22
30, 34, 38, 40 & 42-FOOT PROJECT
STA. 30+00 CUT-55 THRU STA. 20+00 TERMINAL CHANNEL

PLAN

Scale: AS SHOWN

Drawing no. **43**

SHEET 43 OF 57





 US Army Corps of Engineers

 Jacksonville District

 SAFETY ON THIS JOB

 DEPENDS ON YOU

DEPARTMENT OF THE ARMY

 JACKSONVILLE DISTRICT, CORPS OF ENGINEERS

 JACKSONVILLE, FLORIDA

Matchline Sheet No. 043 STA. 20+00

 Matchline Sheet No. 044 STA. 20+00

JACKSONVILLE HARBOR, FLORIDA

 ANNUAL EXAMINATION SURVEY FY22

 STA. 30, 34, 38, 40 & 42-FOOT PROJECT

 STA. 20+00 THRU STA. 30+00 TERMINAL CHANNEL

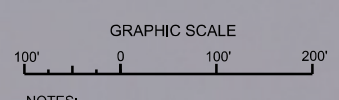
 PLAN

Scale: AS SHOWN

 Drawing no.

44

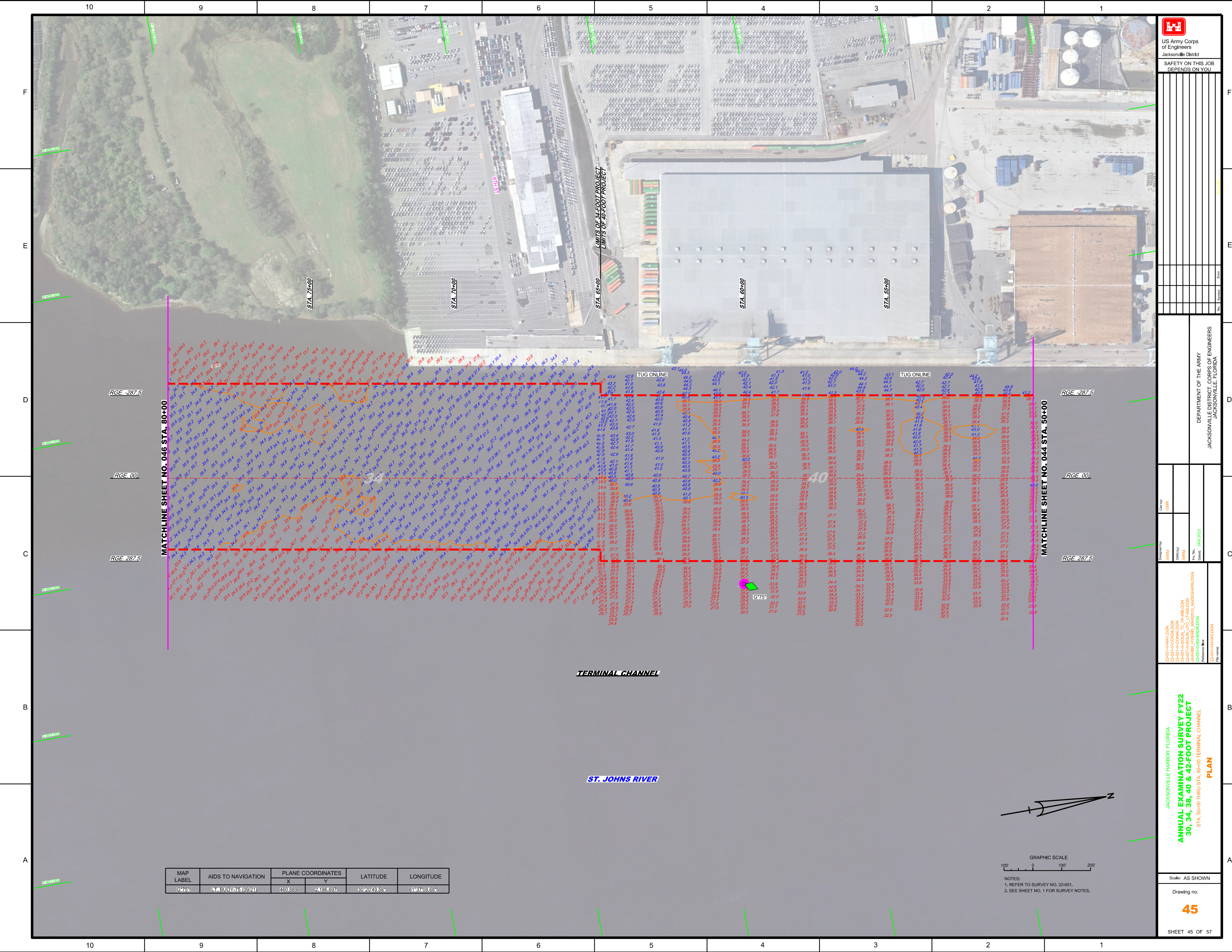
 SHEET 44 OF 57



NOTES:

 1. REFER TO SURVEY NO. 22-001.

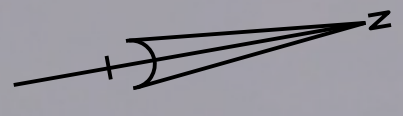
 2. SEE SHEET NO. 1 FOR SURVEY NOTES.



Department of the Army
 Jacksonville District, Corps of Engineers
 Jacksonville, Florida

Check by:	GHR
Designed by:	WRM
Drawn by:	WRM
Inch/Scale:	AS SHOWN
Date:	JAN 2022

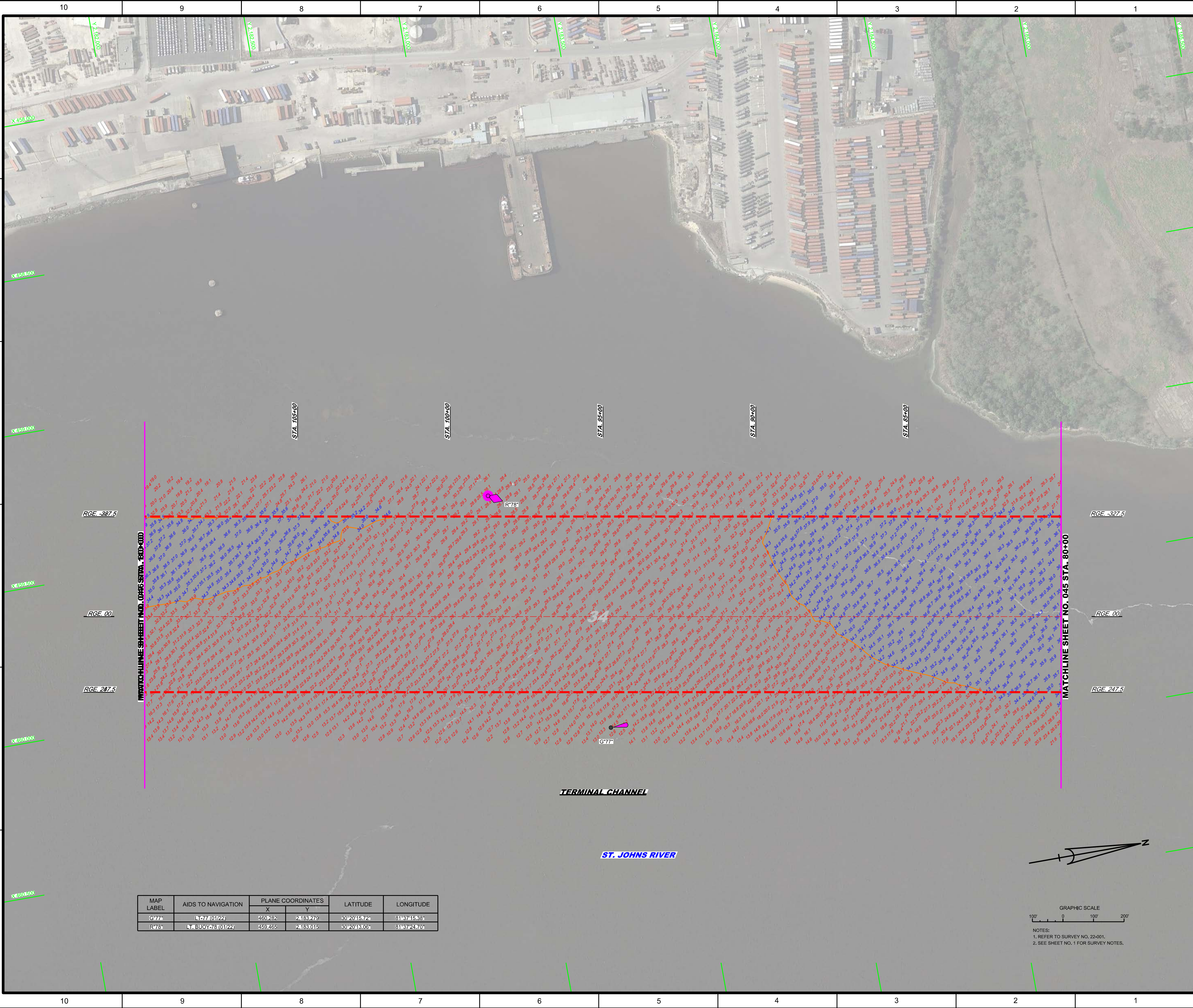
MAP LABEL	AIDS TO NAVIGATION	PLANE COORDINATES		LATITUDE	LONGITUDE
		X	Y		
G75*	LT, BUOY-75 (09/21)	480.889	2,186.697	30°20'49.58"	81°37'08.68"



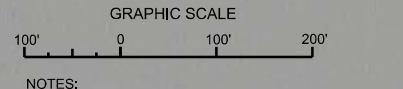
GRAPHIC SCALE
 100' 0' 100' 200'

NOTES:
 1. REFER TO SURVEY NO. 22-001.
 2. SEE SHEET NO. 1 FOR SURVEY NOTES.


JACKSONVILLE HARBOR, FLORIDA
ANNUAL EXAMINATION SURVEY FY22
30, 34, 38, 40 & 42-FOOT PROJECT
 STA. 50+00 THRU STA. 80+00 TERMINAL CHANNEL
PLAN



MAP LABEL	AIDS TO NAVIGATION	PLANE COORDINATES		LATITUDE	LONGITUDE
		X	Y		
G77*	LT-77 (01/22)	460.282	2,183.279	30°20'15.72"	81°37'15.38"
R78*	LT BUOY 78 (01/22)	459.465	2,183.015	30°20'13.06"	81°37'24.70"



NOTES:
 1. REFER TO SURVEY NO. 22-001.
 2. SEE SHEET NO. 1 FOR SURVEY NOTES.



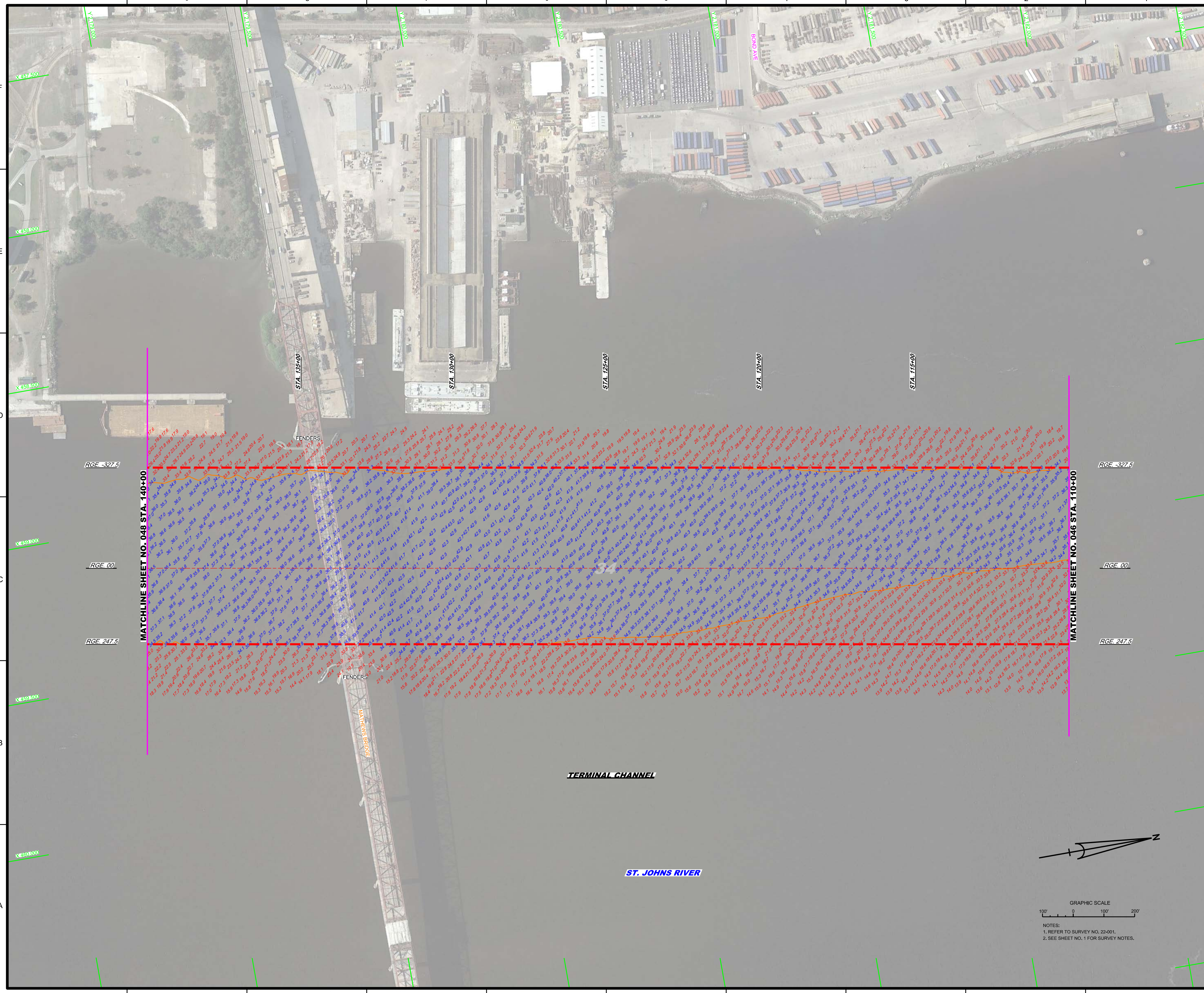
US Army Corps of Engineers
 Jacksonville District
 SAFETY ON THIS JOB
 DEPENDS ON YOU

DEPARTMENT OF THE ARMY
 JACKSONVILLE DISTRICT, CORPS OF ENGINEERS
 JACKSONVILLE, FLORIDA

Call by: GHR
 Designed by: WRM
 Drawn by: WRM
 File Name: 22-001-EB-SR-000N
 Date: JAN 2022

JACKSONVILLE HARBOR, FLORIDA
ANNUAL EXAMINATION SURVEY FY22
30, 34, 38, 40 & 42-FOOT PROJECT
 STA. 80+00 THRU STA. 110+00 TERMINAL CHANNEL
PLAN

Scale: AS SHOWN
 Drawing no.
46
 SHEET 46 OF 57



US Army Corps of Engineers
Jacksonville District

SAFETY ON THIS JOB
DEPENDS ON YOU

DEPARTMENT OF THE ARMY
JACKSONVILLE DISTRICT, CORPS OF ENGINEERS
JACKSONVILLE, FLORIDA

Designed by: WRM
Checked by: GHR

Drawn by: WRM
Checked by: GHR

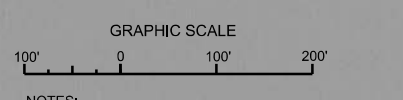
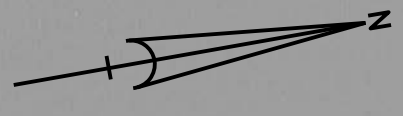
Date: JAN 2022

JACKSONVILLE HARBOR, FLORIDA
ANNUAL EXAMINATION SURVEY FY22
30, 34, 38, 40 & 42-FOOT PROJECT
STA. 110+00 THRU STA. 140+00 TERMINAL CHANNEL
PLAN

Scale: AS SHOWN

Drawing no. **47**

SHEET 47 OF 57



NOTES:
1. REFER TO SURVEY NO. 22-001.
2. SEE SHEET NO. 1 FOR SURVEY NOTES.

MATCHLINE SHEET NO. 048 STA. 140+00

MATCHLINE SHEET NO. 046 STA. 110+00

TERMINAL CHANNEL

ST. JOHNS RIVER

FENDERS

FENDERS

STA. 135+00

STA. 130+00

STA. 125+00

STA. 120+00

STA. 115+00

RGE. -327.5

RGE. -327.5

RGE. 00

RGE. 00

RGE. 247.5

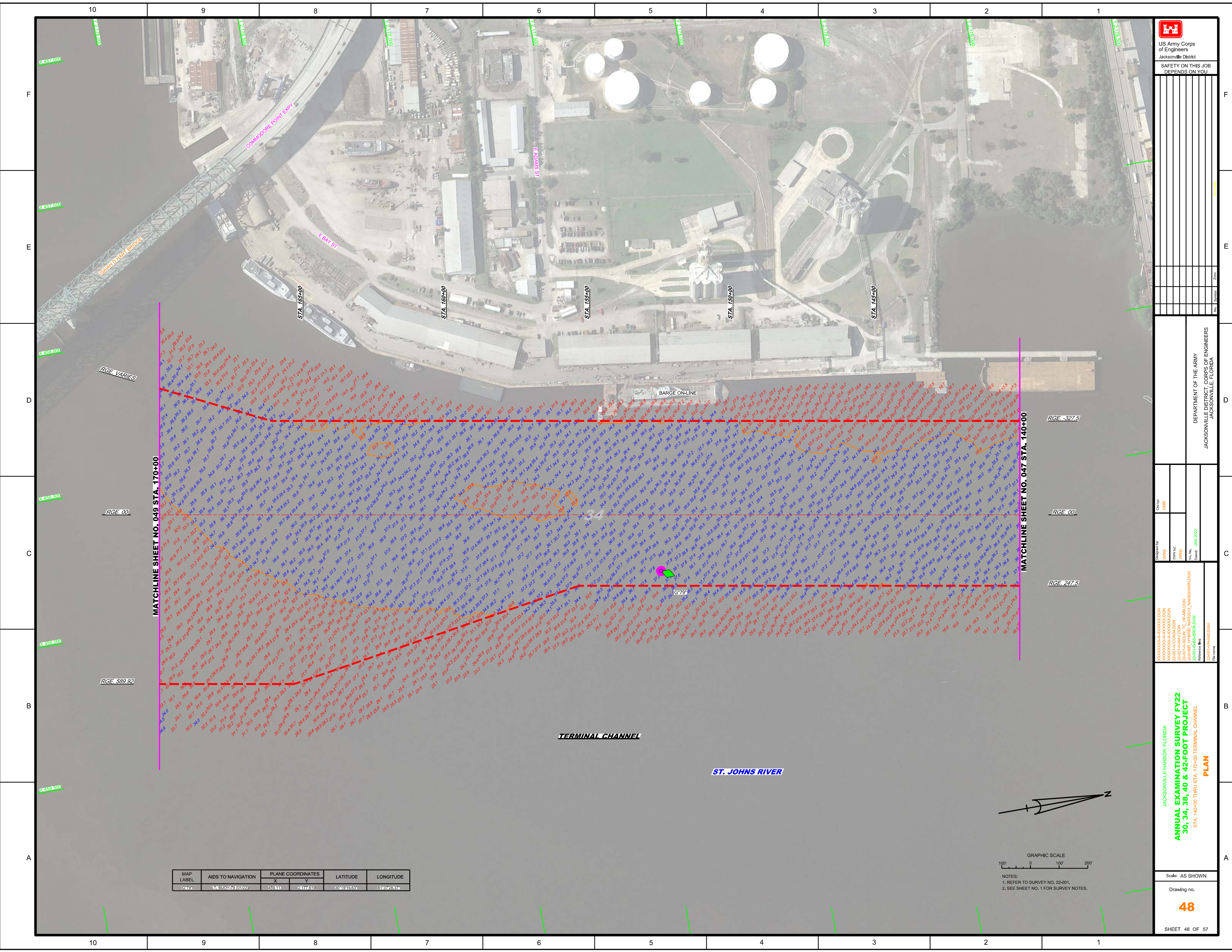
RGE. 247.5

10
9
8
7
6
5
4
3
2
1

F
E
D
C
B
A

10
9
8
7
6
5
4
3
2
1

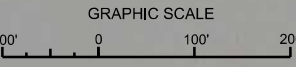
F
E
D
C
B
A



MATCHLINE SHEET NO. 049 STA. 170+00

MATCHLINE SHEET NO. 047 STA. 140+00

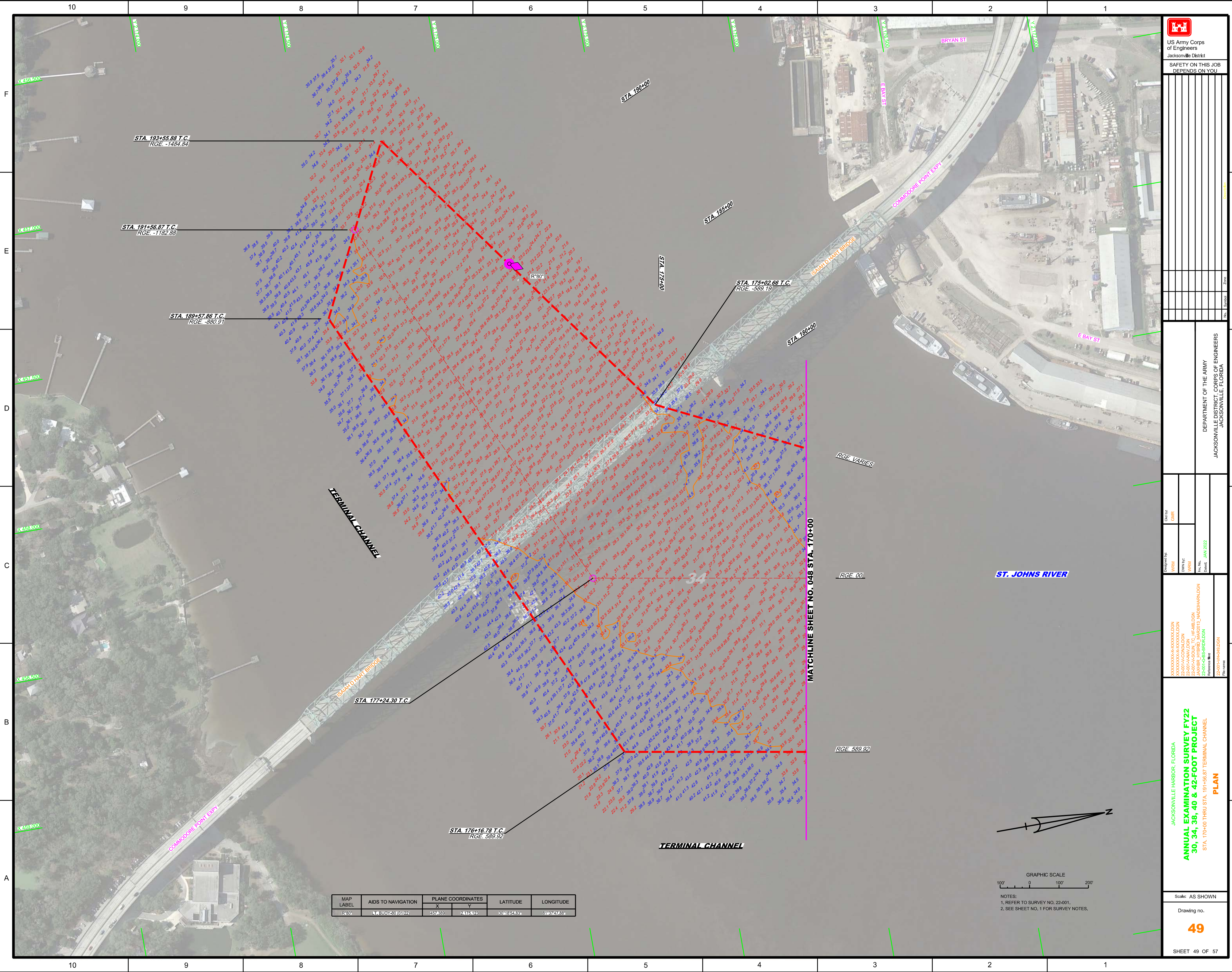
MAP LABEL	AIDS TO NAVIGATION	PLANE COORDINATES		LATITUDE	LONGITUDE
		X	Y		
G79	Light Buoy 79 (1722)	459418	2417649	30464839	31822837




NOTES:
 1. REFER TO SURVEY NO. 22-001.
 2. SEE SHEET NO. 1 FOR SURVEY NOTES.



 US Army Corps of Engineers Jacksonville District SAFETY ON THIS JOB DEPENDS ON YOU	
DEPARTMENT OF THE ARMY JACKSONVILLE DISTRICT, CORPS OF ENGINEERS JACKSONVILLE, FLORIDA	
Project No. 22-001 Drawing No. 48 SHEET 48 OF 57	Title: ANNUAL EXAMINATION SURVEY FY22 STA. 140+00 THRU STA. 170+00 TERMINAL CHANNEL PLAN
Prepared by: WRM, GHR Checked by: WRM, GHR Date: JAN 2022	





 US Army Corps of Engineers
 Jacksonville District
 SAFETY ON THIS JOB
 DEPENDS ON YOU

DEPARTMENT OF THE ARMY
 JACKSONVILLE DISTRICT, CORPS OF ENGINEERS
 JACKSONVILLE, FLORIDA

Designed by: WRM
 Drawn by: WRM
 Checked: JAW 2022
 Date: JAN 2022

JACKSONVILLE HARBOR, FLORIDA
ANNUAL EXAMINATION SURVEY FY22
30, 34, 38, 40 & 42-FOOT PROJECT
 STA. 170+00 THRU STA. 191+56.87 TERMINAL CHANNEL
PLAN

Scale: AS SHOWN
 Drawing no. **49**
 SHEET 49 OF 57

MAP LABEL	AIDS TO NAVIGATION	PLANE COORDINATES		LATITUDE	LONGITUDE
		X	Y		
R30	LT-BUOY-30 (0122)	457,800	247,612	30°16'54.03"	81°07'47.05"



NOTES:
 1. REFER TO SURVEY NO. 22-001.
 2. SEE SHEET NO. 1 FOR SURVEY NOTES.

